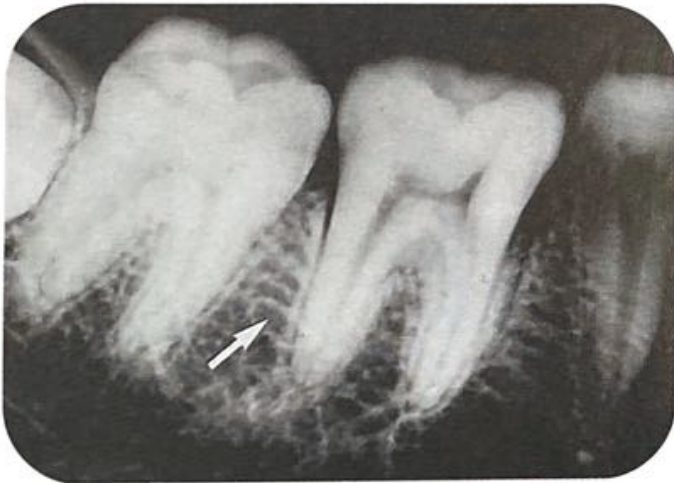




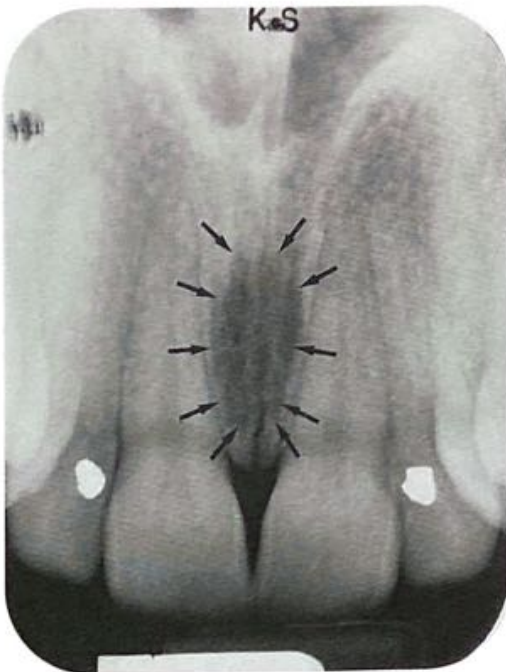
Identify this radiopaque band

Inferior border of the mandible



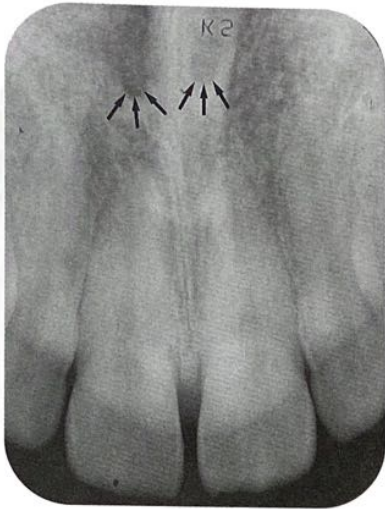
Identify this type of bone

Cancellous bone



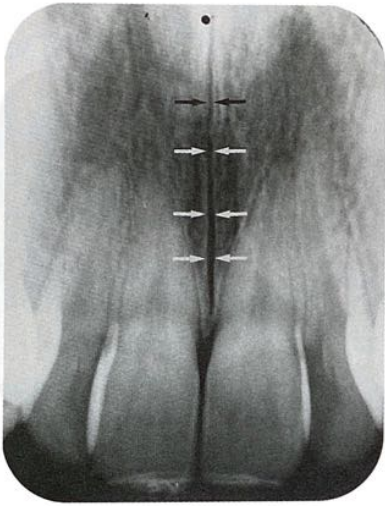
Identify this ovoid radiolucency

Incisive foramen



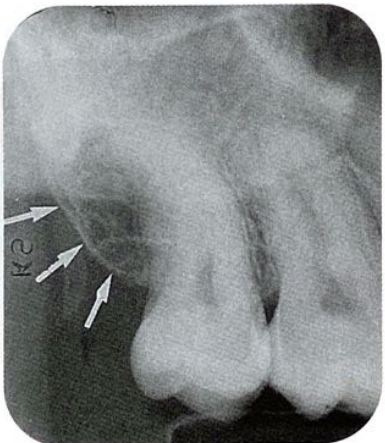
Identify the radiolucent areas

Superior foramina
of incisive canal



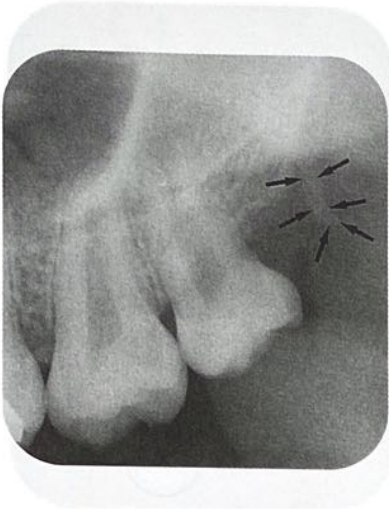
Identify the thin radiolucent line

Median palatal suture



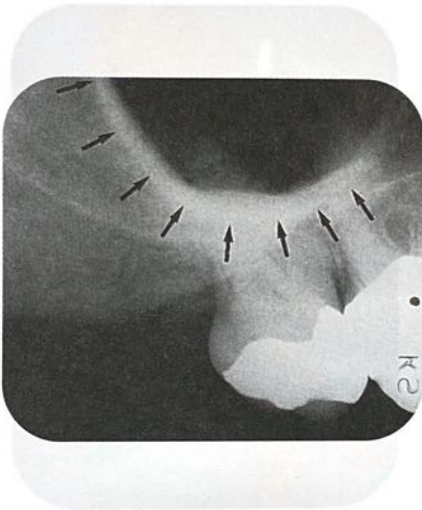
Identify the radiopaque area

Maxillary tuberosity



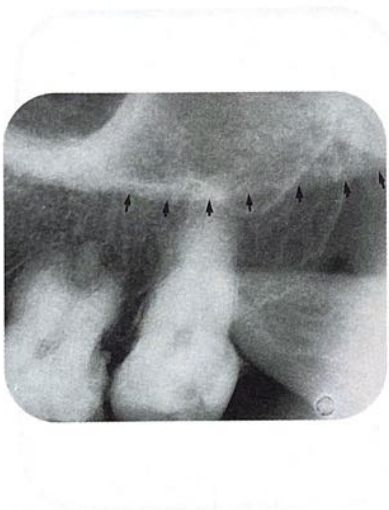
Identify the radiopaque area

Hamulus
(hamular process)



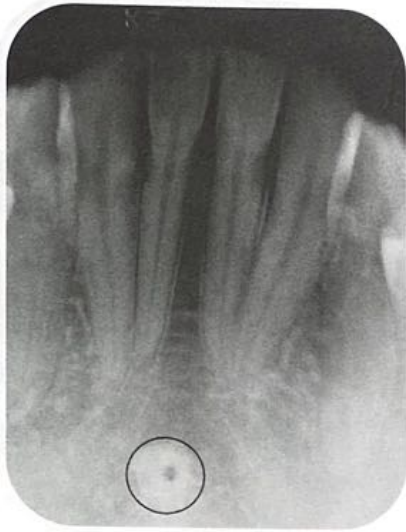
Identify the radiopaque area

Zygomatic process
of maxilla



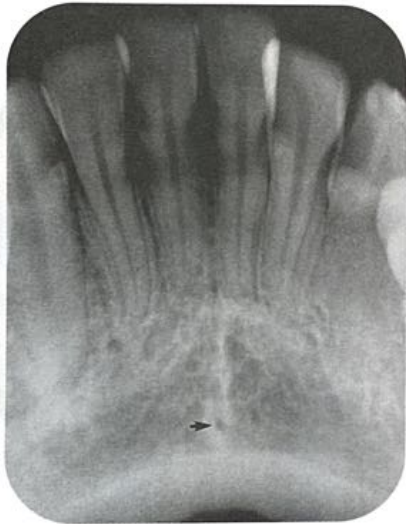
Identify the radiopaque band

Zygomatic bridge



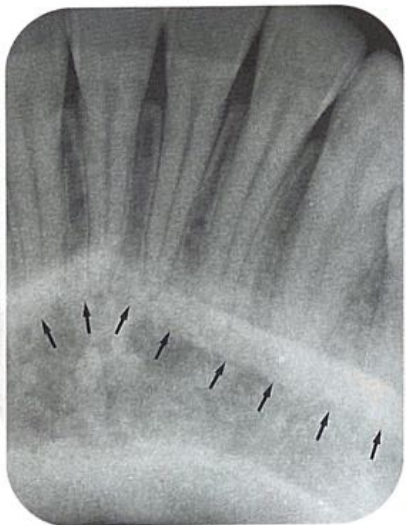
Identify the
round
radiopacity

Genial tubercles



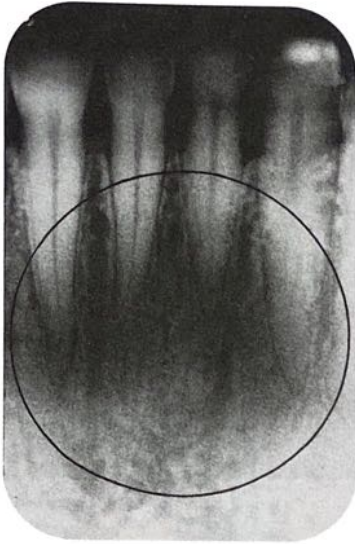
Identify the
radiolucent
dot

Lingual foramen



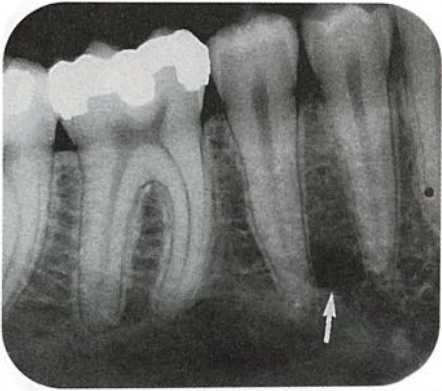
Identify this
radiopaque
band

Mental ridge



Identify this radiolucent area

Mental fossa



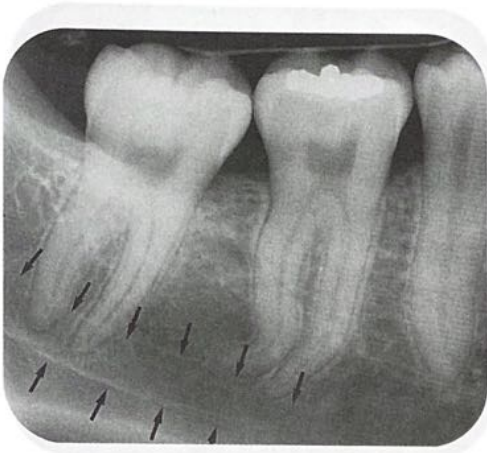
Identify this radiolucency

Mental foramen



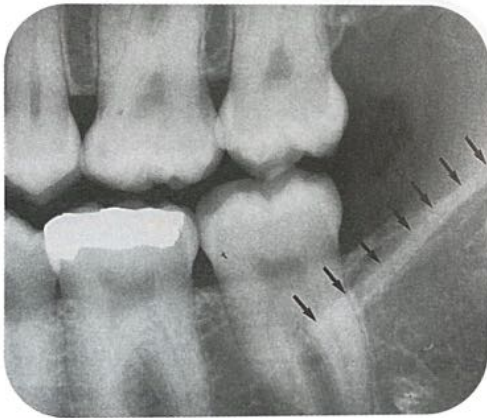
Identify this radiopaque band

Mylohyoid ridge



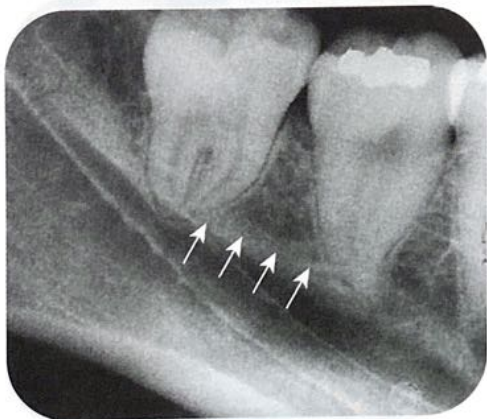
Identify the
Identify this
area below
the arrows

Submandibular
Mandibular canal



Identify this
radiopaque
band

**External oblique
ridge**



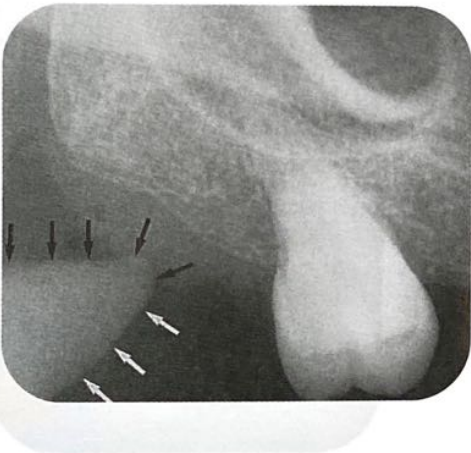
Identify this
radiopaque
band

**Internal oblique
ridge**



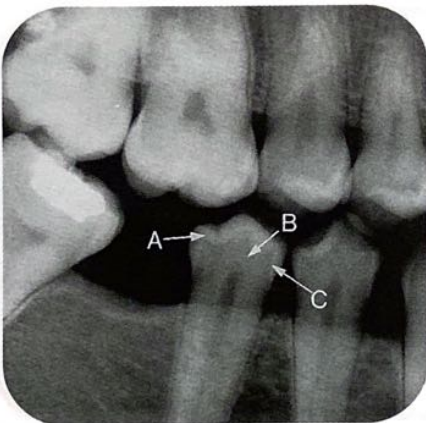
Identify the radiolucent area below the arrows

Submandibular fossa



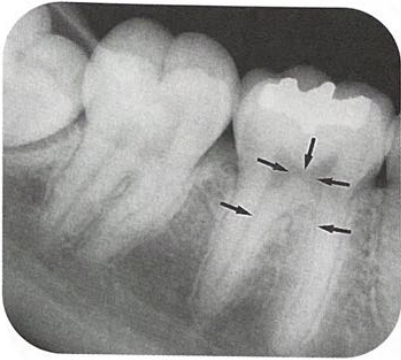
Identify this radiopacity

Coronoid process



Identify a, b, and c

a - enamel
b - dentin
c - DEJ



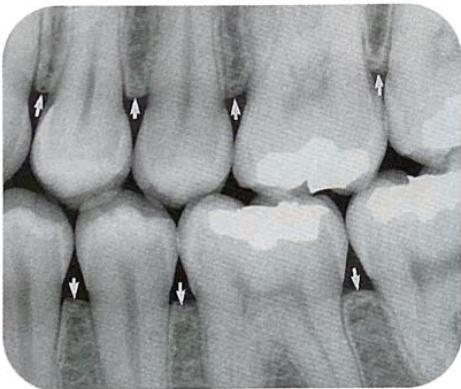
Identify the radiolucent areas

Pulp chamber and pulp canals



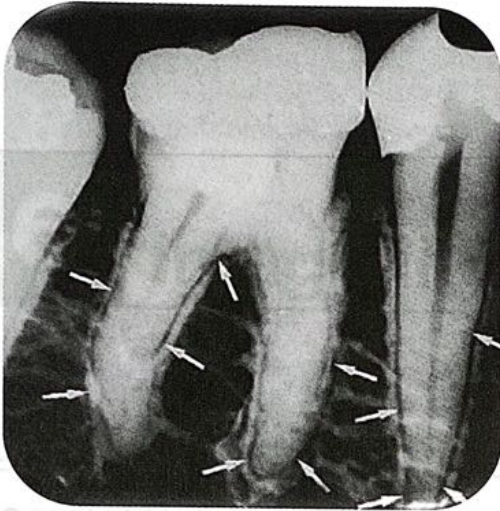
Identify the radiopaque areas

Lamina dura



Identify this area of bone

Crestal lamina dura



Identify the
thin
radiolucent
line

Periodontal ligament space

CHAPTER

LEARNING OBJECTIVES

CHAPTER 30 INTRODUCTION TO IMAGE INTERPRETATION

Written Exercises

- Define the roles of the dentist and dental auxiliary in the interpretation of dental images.
- Describe who is able to interpret dental images.
- Summarize the importance of the interpretation of images.
- Discuss the difference between interpretation and diagnosis.
- Describe when and where dental images are interpreted.
- Describe how image interpretation can be used to educate the dental patient about the importance and use of dental images.

CHAPTER 31 DESCRIPTIVE TERMINOLOGY

Written Exercises

- Describe lesions on a dental image in terms of appearance, location, and size.

CHAPTER 32 IDENTIFICATION OF RESTORATIONS, DENTAL MATERIALS, AND FOREIGN OBJECTS

Written Exercises

- Define key terms associated with identifying restorations, materials, and foreign objects on images.
- On dental images, identify and describe the appearance of amalgam, gold, stainless steel, chrome, post and core, porcelain, porcelain-fused-to-metal, composite, and acrylic.
- On dental images, identify and describe the appearance of base materials, metallic pins, gutta-percha, silver points, removable partial dentures, complete dentures, orthodontic bands, brackets and wires, fixed retainers, implants, suture wires, splints, and stabilizing arches.
- On dental images, identify and describe the appearance of jewelry and eyeglasses.

CHAPTER 33 INTERPRETATION OF DENTAL CARIES